

Geography: Our Local Area

The children will investigate Bedlington. The topic will be taught through the theme of a family of aliens who want to move to Bedlington! The children will learn that Bedlington is in Northumberland in the North-East of England. They will describe their own routes to school and compare short local journeys.

The children will discuss the features of Bedlington and rank them by importance. They will investigate local job opportunities and find a job for all of our visiting family! The children will discuss the positive and negative points about Bedlington and give suggestions for how the town can be improved.

Literacy:

The children will read stories set in familiar places and will discuss the events, characters and themes. They will use the stories to inspire their own writing about familiar places. They will write short stories and predict the endings to the stories we read.

They will retell stories through drama.

We will work on handwriting, sentence building, spelling patterns, punctuation and grammar in our writing. The children will use topic books and web sites to find out information about plants and our local area.

PE:

The children will become familiar with the procedures required for safe and enjoyable P.E. They will be introduced to resources that are used regularly in P.E. and will take turns to be responsible for managing them. In "Multiskills" this half term, the children will practise a range of ball skills as well as learning to hop, skip, run and jump effectively, developing their agility, balance and co-ordination.

Computing:

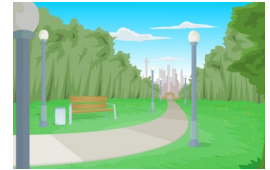
The children will learn how to use a computer safely and efficiently, how to open and close applications and how to save and retrieve their documents.

They will learn that the computer can be used to find information quickly. They will use the term *algorithm* to give specialised instructions to a computer program to make something happen, e.g. to guide someone through a maze.



Year One: Autumn A 2019

Our Local Area



RE: How does it feel to belong

The children will discuss the features of a church and understand why it is a special place for Christians. They compare typical features of clubs or groups such as badges or buildings and compare them with things that are associated with Christianity, such as a church or the symbol of a cross.

Art: Nature Sculptures

Linked to their local area work as well as their work in science about plants, the children will learn how to make sculptures purely made from natural materials. Inspired by the work of Andy Goldsworthy, they will collect, make and showcase their pieces on a large scale!

Music:

The children will sing songs to well known tunes thinking about rhythm, tempo and volume.

PHSE:

We will learn how to create a safe and happy playground for us all to play in using the school's golden rules.

Through Lucinda and Godfrey, the children will think about friendship and the qualities of a really good friend. They will also learn the correct scientific names for all body parts, including our private parts.

Maths:

The children will count forwards and backwards to 20 saying the number that is 1 or 2 more or less. They will add numbers to 20, count objects accurately and form numerals correctly. The children will estimate amounts and order numbers within 20.

The children will measure length, weight and capacity using non-standard units such as counters or hands. They will use balance scales to weigh objects.

Science: Plants

The children will explore plants in the school grounds and identify them using apparatus such as magnifying glasses. They will describe the features of plants, learn their basic structure and see how they change over time. They will later group them by certain characteristics and features.